

Accessories Manual

QW, GB



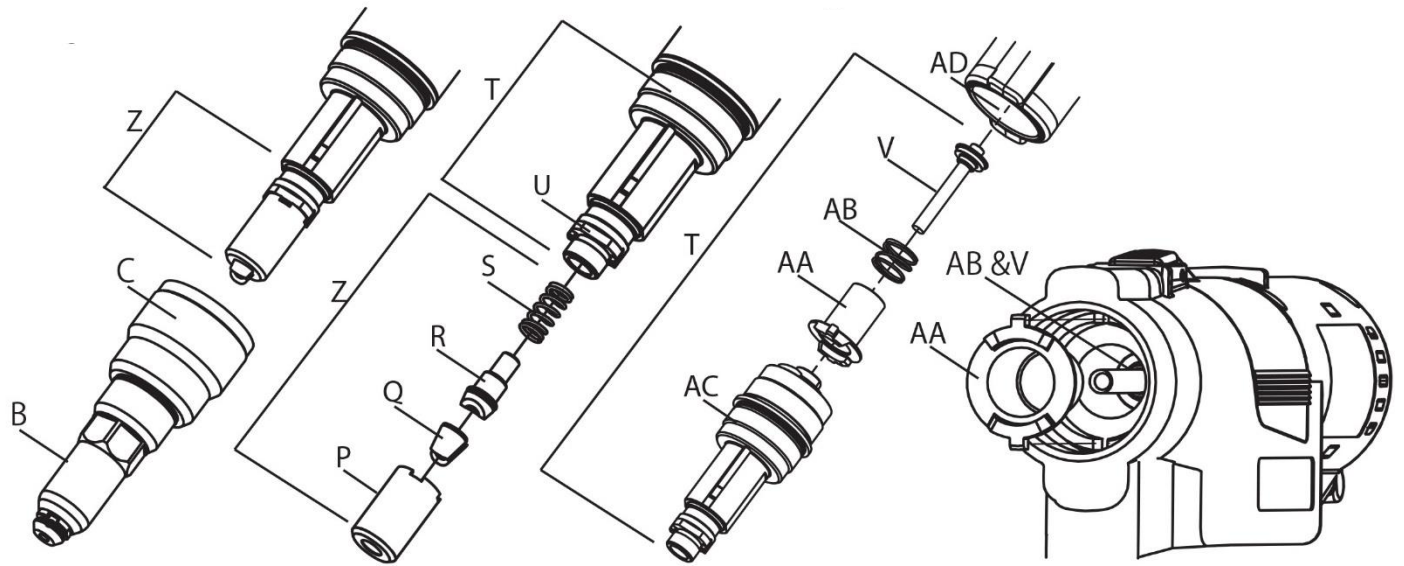
ProSet® PB3400 structural rivet tool

Battery Power Tool

STANLEY Engineered Fastening policy is one of continuous product development and improvement and we reserve the right to change the specification of any product without prior notice.

Nose Assemblies

Nose equipment varies according to the blind rivet type being installed. Each nose assembly represents a unique set of components which can be ordered individually. Component numbers refer to the illustration below. We recommend maintaining some stock of spares as items will need regular replacement if worn. Read the Servicing Manual for nose assembly instructions.



Fitting instructions

Mounting the nosepiece

- Select the correct nosepiece for the rivet to be installed. Reference the Accessories Manual for appropriate nose equipment.
- Tighten the nosepiece (**A**) into the nose housing (**B**) by turning it clockwise using 11 mm spanner.
- Select the correct jaw pusher or jaw pusher assembly (**R**) and Tail Guide (**V**) that matches the Nose Piece selected. Reference the Accessories Manual for appropriate nose equipment.

NOTE: The Tail Guide that comes installed on the tool as purchased matches the installed Nose Piece. Reference the Accessories Manual for appropriate nose equipment for the actual Tail Guide part number.

- Put the Tail guide (**V**) into the Spindle of the in Gear housing (**AD**). Put spindle clutch spring (**AB**) and spindle clutch (**AA**) over the tail guide (**V**) and tighten Pulling head assembly (**AC**) counter clockwise using a 24mm spanner.
- Insert jaw pusher (**R**) into jaw pusher spring (**S**)
- Reassemble jaw set (**Q**) and jaw guide (**P**) onto Pulling head (**T**)

NOTE: Do NOT use spanners to mount jaw guide (**P**) onto front clutch (**U**). Manual tightening of Jaw guide (**P**) is enough to lock onto front clutch (**U**)

Please see our instruction video on changing the tail guide at <https://www.youtube.com/watch?v=vWgi5XVl9bc>

PLACING SPECIFICATIONS

Placing capacity chart

Rivet Type	PB3400			
	4.8mm [3/16"]	6.0 mm	6.4mm [1/4"]	8.0/9.0 mm
OPEN END	•		•	
CLOSED END	•		•	
AVEX®/ STAVEX®	•		•	
AVINOX®/ AVIBULB®	•	•	•	
HR/HT	•		•	
INTERLOCK®	•		•	
Hemlok®			•	
KLAMP-TITE®/ KTR	•		•	
BULBEX®/LS/TL	•			
MONOBOLT®	•		•	
MULTI-GRIP®	•			
PULL-THRU (PT)				
Q RIVET	•		•	
T LOK®	•			
T-RIVET	•			
AVSEAL® II			•	•

Nose piece chart

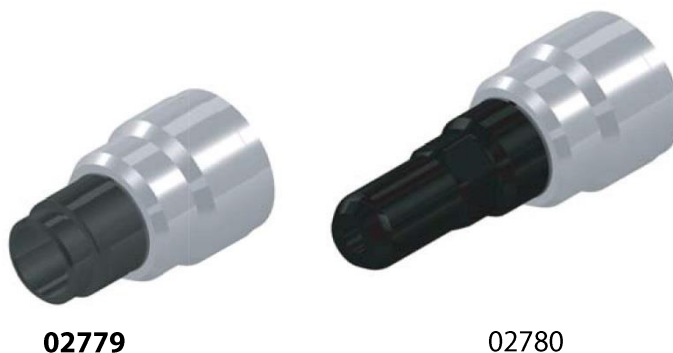
Rivet size $\phi 4.8(3/16")$ Bold: Equipped on the tool

Rivet Type	Material (Body/Mandrel)				
	Al/Al	Al/St Al/SS	NiCu/St NiCu/SS	St/St SS/St	SS/SS
Open End	61855*1 or 02762*2	61855*1 or 02762*2	61855*1 or 02762*2	61855*1 or 02762*2	61855*1 or 02762*2
Closed End	61803*1	61803*1	-	61803*1	61855*1 or 02762*2
AVEX [®]	-	61855*1 or 02762*2	-	-	-
STAVEX [®]	-	-	-	61855*1	61855*1
HRrivets [®]	04414*1	61855*1 or 02762*2	-	04414*1	04414*1
HSrivets [®]	-	-	-	61855*1 or 02762*2	-
AVINOX [®]	-	-	-	-	61855*1 or 02762*2
AVIBULB [®]	-	-	-	61855*1 or 02762*2	-
TLrivets [®] / BULBEX [®]	61855*1 or 02762*2	-	-	-	-
KLAMP-TITE [®] BAPK	-	61803*1	-	-	-
KLAMP-TITE [®] BAPKTR	-	*3	-	-	-
INTERLOCK [®]	02762*2	-	-	02762*2	02762*2
MONOBOLT [®]	02764*2	-	-	02764*2	02764*2
Q Rivet	61855*1 or 02762*2	61855*1 or 02762*2	-	61855*1 or 02762*2	61855*1 or 02762*2
T LOK [®]	-	-	-	61855*1 or 02762*2	-
T Rivet	-	02762*2	-	-	-

*1 Option SA Nose housing (02780) is required.

*2 Option SA Nose housing (**02779**) is required

*3 Use non-mandrel retention nosepiece with nose housing (02780)



Rivet size $\phi 6.4(1/4")$ Bold: Equipped on the tool

Rivet Type	Material (Body/Mandrel)				
	Al/Al	Al/St Al/SS	NiCu/St NiCu/SS	St/St SS/St	SS/SS
Open End	-	02740*1 or 02768	02740*1 or 02768	02740*1 or 02768	-
Closed End	-	02760*1	-	-	-
AVEX [®]	-	02740*1 or 02768	-	-	-
STAVEX [®]	-	-	-	02740*1 or 02768	-
HRrivets [®]	02740*1 or 02768	-	-	02772*1	-
HSrivets [®]	02740*1 or 02768	-	-	02740*1 or 02768	-
AVINOX [®] XT	-	-	-	-	02776*2
AVIBULB [®] (6mm)	-	-	-	02740*1 or 02768	-
AVIBULB [®] XT	-	-	-	02776*2	-
KLAMP-TITE [®] BAPK	-	02740*1 or 02768	-	-	-
KLAMP-TITE [®] BAPKTR	-	*3	-	-	-
INTERLOCK [®]	02768	-	-	02768	02768
MONOBOLT [®]	02770*2	-	-	02770*2	02770*2
HEMLOK [®]	02768	-	-	02768	-
Q Rivet	02740*1 or 02768	02740*1 or 02768	-	02740*1 or 02768	02740*1 or 02768
T Rivet	-	02768	-	-	-

*1 Option. SA Nose housing (02780) is required.

*2 Option. SA Nose housing (**02779**) is required

*3 Use non-mandrel retention nosepiece with nose housing (02780)



02768



02779



02780

Equipment

Rivet size $\phi 4.8(3/16")$ Bold : Equipped on the tool

Rivet type	SA Nose housing	Jaws	Spring	SA Jaw Pusher	Tail Guide
Open End	02780*2	11446	02746	02751 (Marking "6")	02778 (Marking "6, 8K")
Closed End (SS/SS)	or 02779*1				
Closed End (Al/Al, Al/St, St/St)	02780*2				
AVEX [®]	02780*2				
STAVEX [®]	or				
HR rivets [®] (Al/St, Al/SS)	02779*1				
HR rivets [®] (Al/Al, St/St, SS/SS)	02780*2				
HS rivets [®]	02780*2 or 02779*1				
AVINOX [®]					
AVIBULB [®]					
TL rivets [®] / BULBEX [®]					
KLAMP-TITE [®] BAPK	02780*2				
KLAMP-TITE [®] BAPKTR					
INTERLOCK [®]	02779*1				
MONOBOLT [®]					
Q Rivet	02780*2				
T LOK [®]	or 02779*1				
T Rivet	02779*1				

*1 Option. Appropriate nosepiece, is required

*2 Option. Appropriate nosepiece is required.



02779



02780



02751



02778

Rivet size $\phi 6.4(1/4")$ **Bold** : Equipped on the tool

Rivet type	SA Nose housing	Jaws	Spring	SA Jaw Pusher	Tail Guide
Open End	02780*2 or 02779*1	11446	02746	02743*2 (Marking "8") or 02753 (Marking "8K")	02748 (Marking "8") or 02778 (Marking "6,8K")
Closed End	02780*2				
AVEX [®]	02780*2 or 02779*1				
STAVEX [®]					
HR rivets [®] (Al/St)					
HR rivets [®] (St/St)	02780*2			02753 (Marking " 8K")	02778 (Marking "6,8K")
HS rivets [®]	02780*2 or 02779*1			02743*2 (Marking "8") or 02753 (Marking "8K")	02748 (Marking "8") or 02778 (Marking "6,8K")
AVIBULB [®] (6mm)					
AVINOX [®] XT	02779*1			02753 (Marking " 8K")	02778 (Marking "6,8K")
AVIBULB [®] XT					
KLAMP-TITE [®] BAPK	02780*2 or 02779*1			02743*2 (Marking "8") or 02753 (Marking "8K")	02748 (Marking "8") or 02778 (Marking "6,8K")
KLAMP-TITE [®] BAPKTR	02780*2			02751*2 (Marking "6")	02778*2 (Marking "6, 8K")
INTERLOCK [®]	02779*1			02743*2 (Marking "8") or 02753 (Marking "8K")	02748 (Marking "8") or 02778 (Marking "6,8K")
MONOBOLT [®]					
HEMLOK [®]					
Q Rivet	02780*2 or 02779*1				
T Rivet	02779*1				

*1 Option appropriate nosepiece is required

*2 Option appropriate nosepiece is required



02779



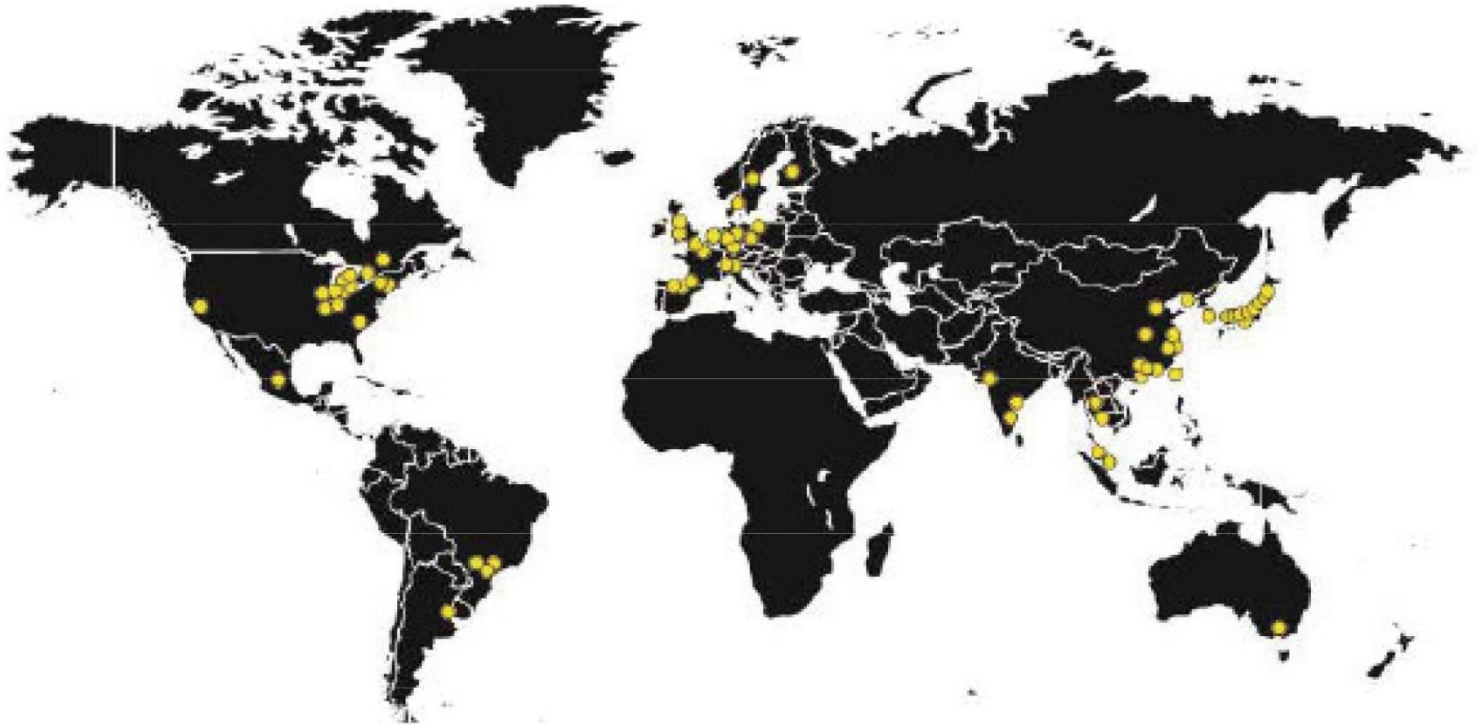
02780



02753 / 02743



02778 / 02748



Holding your world together®

Find your closest STANLEY Engineered Fastening location on www.StanleyEngineeredFastening.com/contact
For an authorized distributor nearby please check www.StanleyEngineeredFastening.com/econtact/distributors

Manual Number	Issue	C/N
TRM00384	B	161128-1

© 2016 Stanley Black & Decker, Inc.

Avdel®, Avex®, Avibulb®, Avinox®, Avseal®, Bulbex®, DEWALT®, Hemlok®, Interlock®, Klamp-Tite®, Monobolt®, POP®, ProSet®, Stavex® and T-Lok® are registered trademarks of Stanley Black & Decker, Inc. and its affiliates. The names and logos of other companies mentioned herein may be trademarks of their respective owners. Data shown is subject to change without prior notice as a result of continuous product development and improvement policy. Your local STANLEY Engineered Fastening representative is at your disposal should you need to confirm latest information.